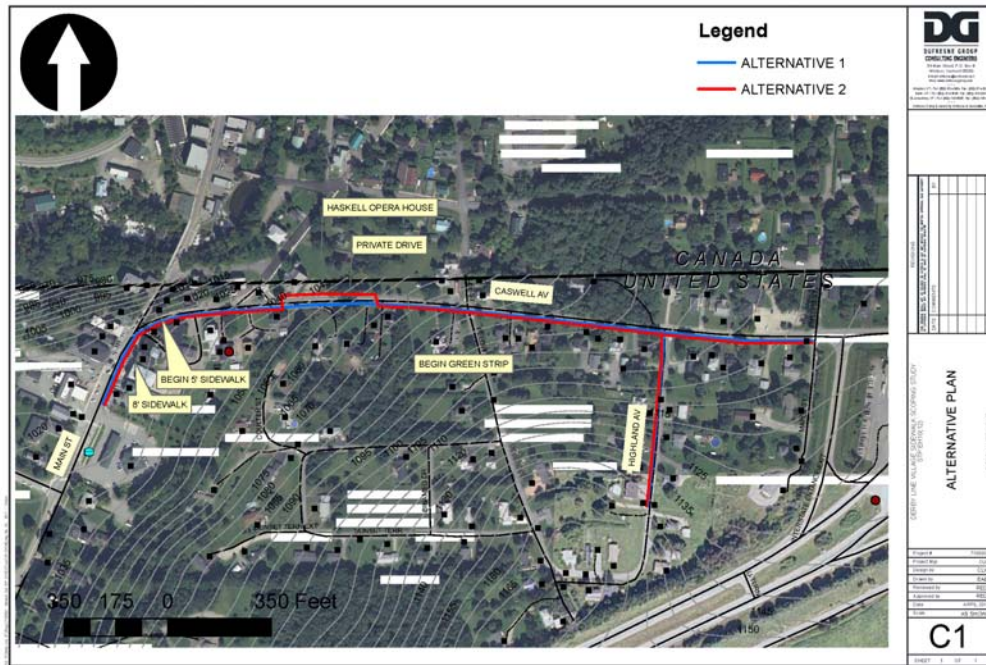


SIDEWALK SCOPING STUDY

DERBY LINE VILLAGE, VERMONT



The Derby Line Village Scoping Study evaluated replacement of approximately 3,200 lf of deteriorated and undersized sidewalk within the Village to provide safe pedestrian access between the residential and Main Street areas of the Village.

Village official's primary concern involved a private driveway that requires sidewalks to cross Caswell Avenue in two locations. The multiple crosswalks create an unsafe condition for pedestrians.

Although not in the original scope, topographic survey was completed prior to winter which allowed for project designs to move forward in advance of grant announcements.

The study included evaluating five alternatives to address the Purpose and Need statement: "To provide safe access between the Main Street Village Area and the residential areas in the vicinity of Highland Avenue along Caswell Avenue.

KEY FEATURES

- The study was completed significantly under budget, allowing topographic survey of the entire project area.
- Additional engineering and survey services provided without increasing the project budget.
- Minimal cultural resource or ROW impacts allow the schedule to be streamlined and the project to proceed to design and construction.