



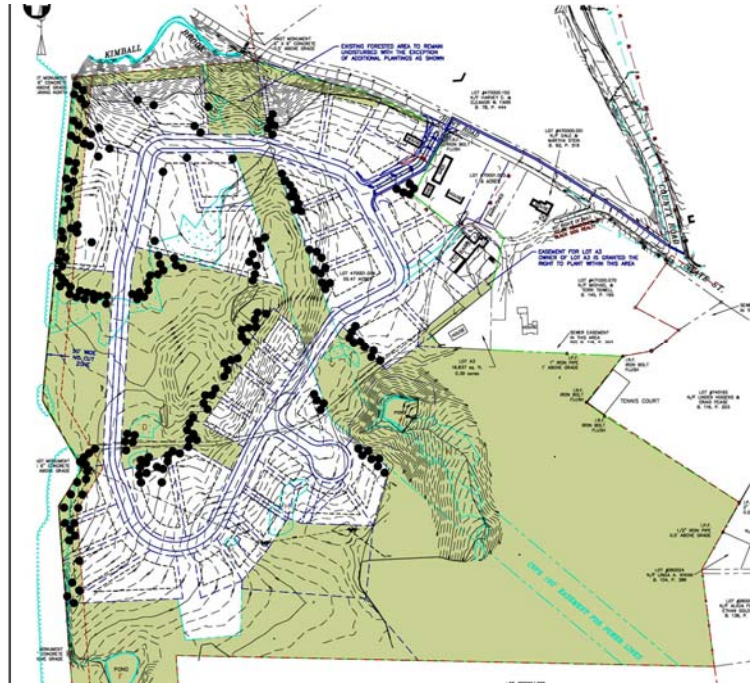
**DUFRESNE GROUP
CONSULTING ENGINEERS**

90 UNIT RESIDENTIAL HOUSING SUBDIVISION

WINDSOR, VERMONT

PROJECT COMPONENTS

- 4,800 linear feet of roadway
- 1,500 feet of storm drain
- 5,250 feet of gravity collection sewer
- 720 feet of force main
- Wastewater pump station
- 6,200 linear feet of 8-inch water main
- Water booster station improvements for variable speed constant pressure pumping and diesel fuel fired pumping to serve both the Mount Ascutney Hospital and the new development



Dufresne Group (DG) provided civil/site engineering for a 58 residential lot subdivision design for 90 units on Hunt Hill Road in Windsor, Vermont. DG served as the civil engineer, land planner, project team leader and permit liaison coordinator for obtaining local, State and Federal permits. DG proactively worked with the following subconsultants to insure the Act 250 permit process was efficient:

- Gilman & Briggs, Wetland Consultants
- Wheeler Environmental, Soils Scientist
- Hartgen Archeological Associates
- Richard Hodge, Agricultural Specialist
- Jonathan Springer, Attorney at Law
- Alex McClellan, Agriculture Specialist
- Terragenous Landscape Architect

PROJECT PERMITS

- Wastewater Disposal and Potable Water Supply Permit
- Subdivision Permit from the Town
- Stormwater Discharge Permit
- General Permit from the Corps of Engineers
- Act 250 Land Use Permit
- Stormwater General Permit

54 Main Street, P.O. Box B, Windsor, VT 05089
297 South Main Street, Barre, VT 05641
459 Portland Street, Suite 102, St. Johnsbury, VT 05819
1996 Depot Street, Manchester Center, VT 05255

(t) 802.674.2904
(t) 802.479.3698
(t) 802.748.8605
(t) 802.768.8291

(f) 802.674.2913
(f) 802.479.2261
(f) 802.748.4512
(f) 802.768.8315

(e) info@dufresnegroup.com
(e) d_g_barre@dufresnegroup.com
(e) d_g_stj@dufresnegroup.com
(e) dg_manchester@dufresnegroup.com