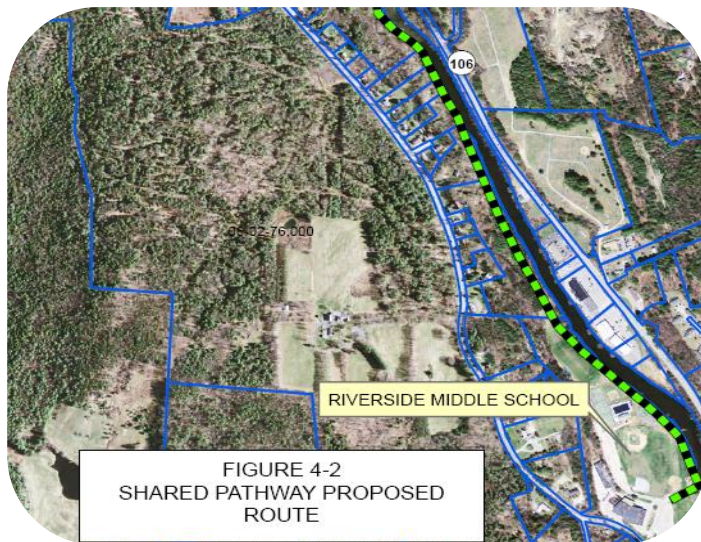
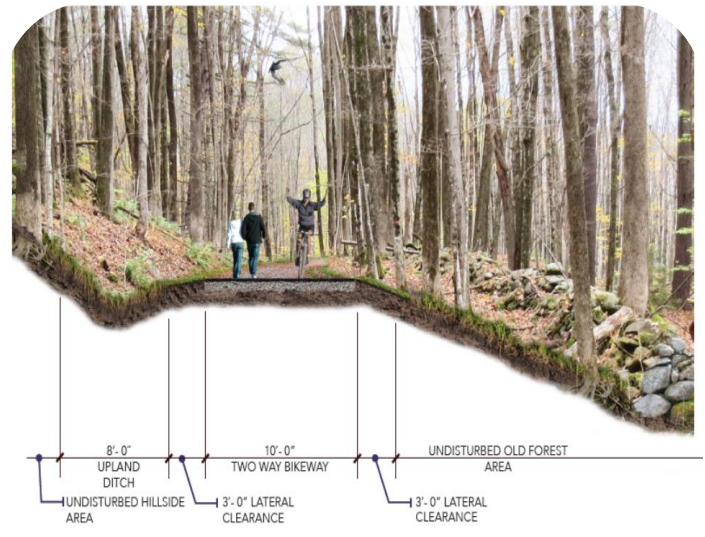


# BIKE/PEDESTRIAN PATHWAY STUDY

## TOWN OF SPRINGFIELD, VERMONT



*Project Orthophoto*



*Conceptual improvements*

The Town of Springfield received funding through the Vermont Transportation Enhancement Program to study alternative routes for pedestrian, bicycle and shared paths from the Springfield downtown area to the North Springfield Dam and Springweather recreation area.

Dufresne Group was hired to identify and prioritize improvements, create a conceptual plan for the project, obtain public input through local concerns meetings, assess the role of historic, archaeological and environmental constraints, and create a preliminary cost estimate of the project to assess its overall feasibility.

The preferred route includes a 2.5 mile shared pathway parallel to the Black River. The path originates at Riverside Middle School and continues south through hardwood forests and open meadows. Although the path crosses several private properties, the existing woodlands provide a dense buffer between the path and existing development.

The project team included representatives from Springfield Trails and Greenways (STAG), Southern Windsor County Regional Planning Commission (SWCRPC), the Town of Springfield and VTrans.

### KEY FEATURES:

- Provides a northern alternative to the heavily used Toonerville Trail south of Springfield, with a cross country path from Riverside to North Springfield.
- Existing logging and walking trails and open meadows reduced clearing requirements.
- Permitting issues are limited to wetlands conditional use. Although there are several stream crossings, the streams have small drainage areas and the crossings are exempt from permitting.
- The pathway is in close proximity to the Black River but avoids flood plains.